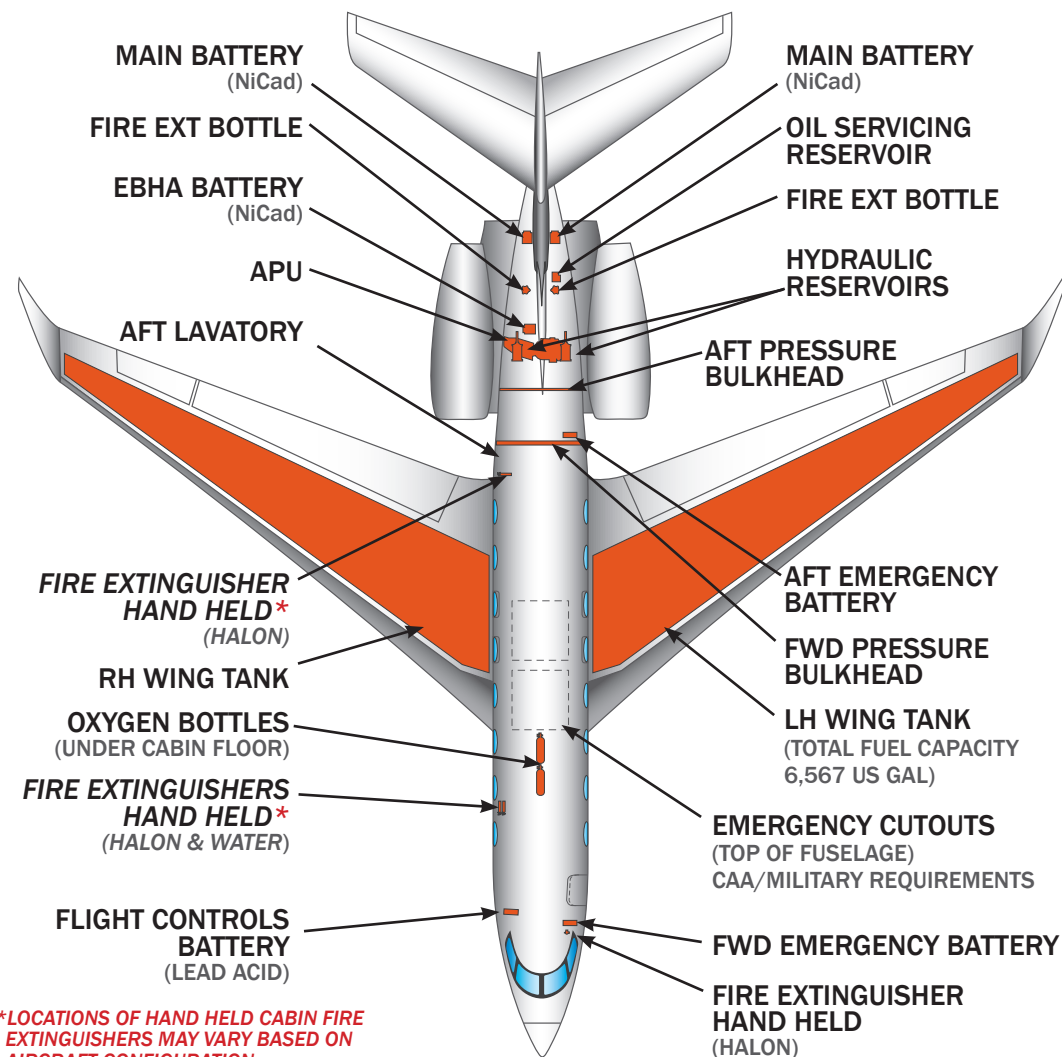
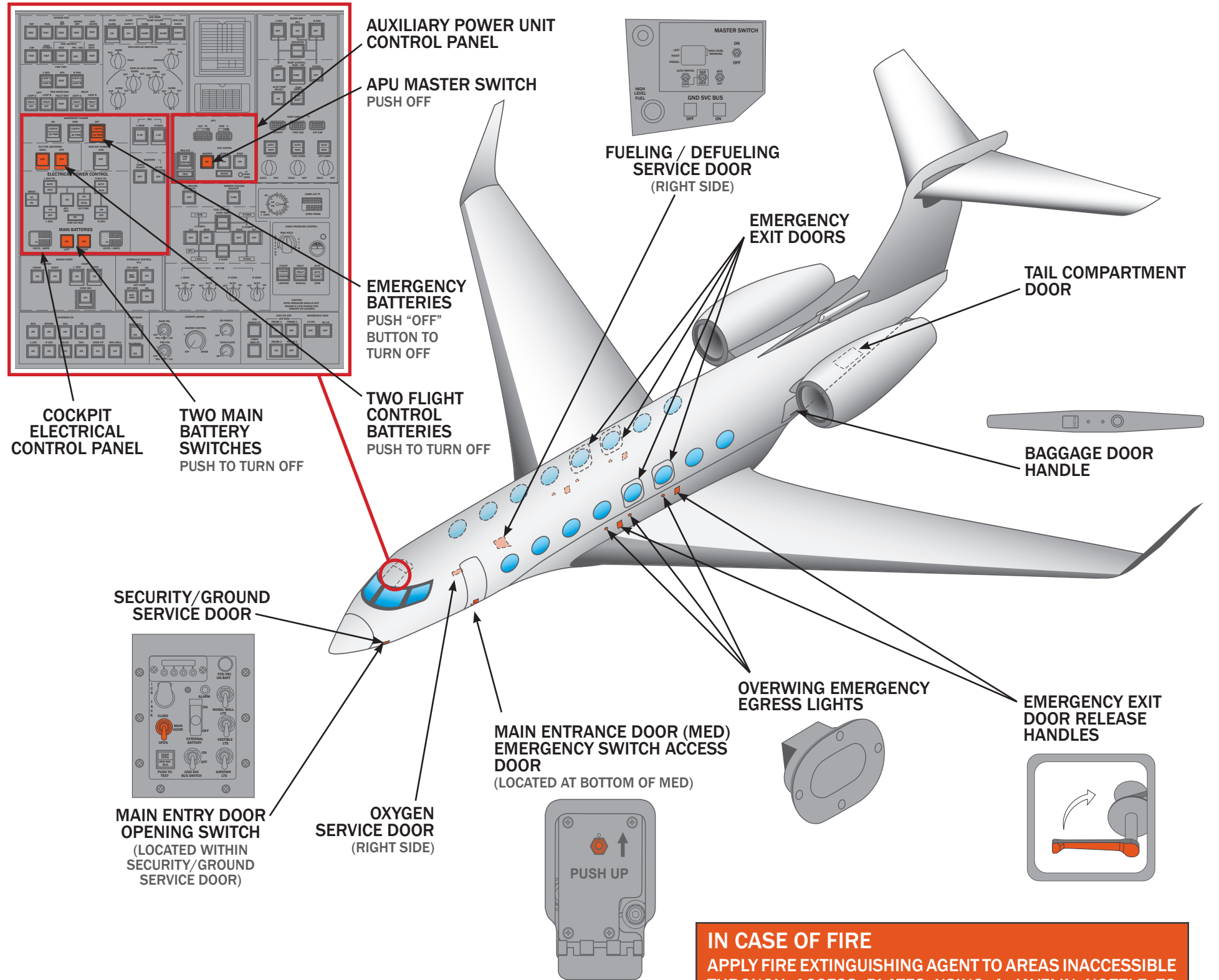
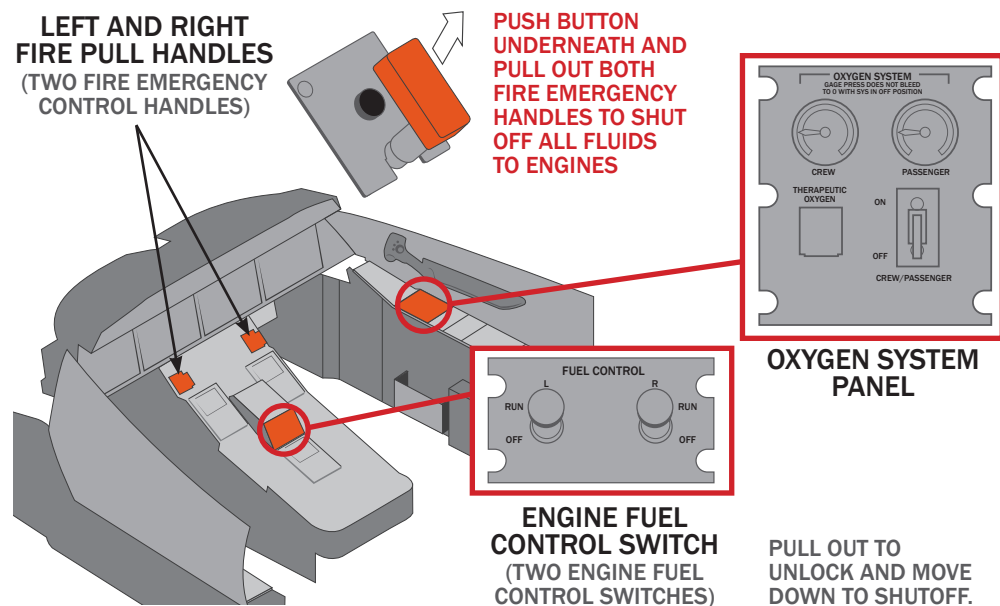


Crash Crew Information



*LOCATIONS OF HAND HELD CABIN FIRE EXTINGUISHERS MAY VARY BASED ON AIRCRAFT CONFIGURATION.

Location of Flammable Fluids & Components



IN CASE OF FIRE
 APPLY FIRE EXTINGUISHING AGENT TO AREAS INACCESSIBLE THROUGH ACCESS PLATES USING A JAVELIN NOZZLE TO PENETRATE THE SKIN

IN CASE OF FIRE
 KEROSENE FIRES CAN BE EXTINGUISHED BY USING CO₂, FOAM OR HIGH PRESSURE WATER SPRAY

Gulfstream G650