

GULFSTREAM GVI

CRASH CREW INFORMATION

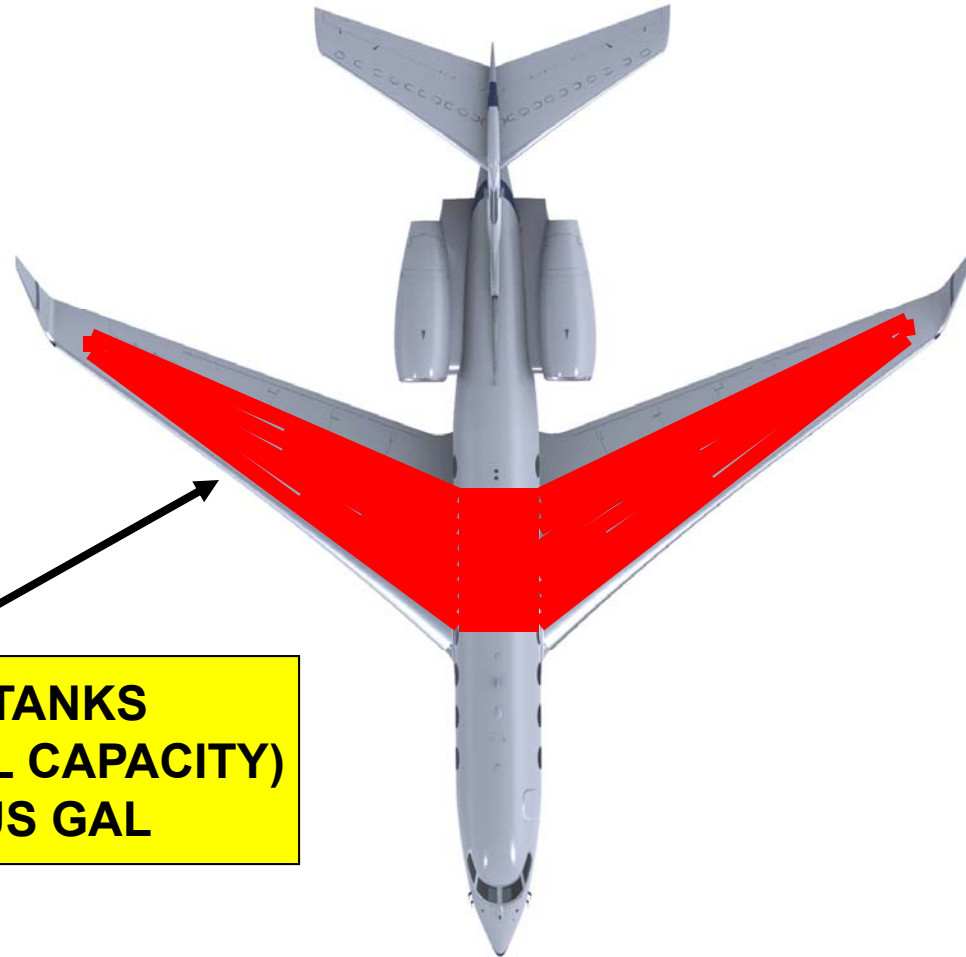


GULFSTREAM GVI CRASH CREW INFORMATION EXTERIOR DOORS



- PRIMARY EMERGENCY EXITS
- ONLY AS A LAST RESORT

**GULFSTREAM GVI
CRASH CREW INFORMATION
FUEL LOADING**



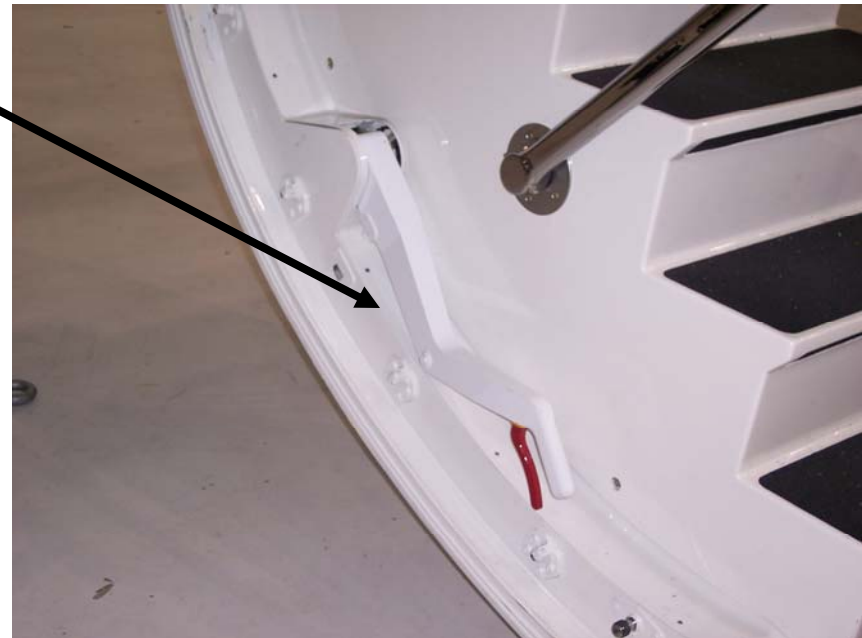
**WING TANKS
(TOTAL FUEL CAPACITY)
6,567 US GAL**

**GULFSTREAM GVI
CRASH CREW INFORMATION
MAIN ENTRY DOOR**



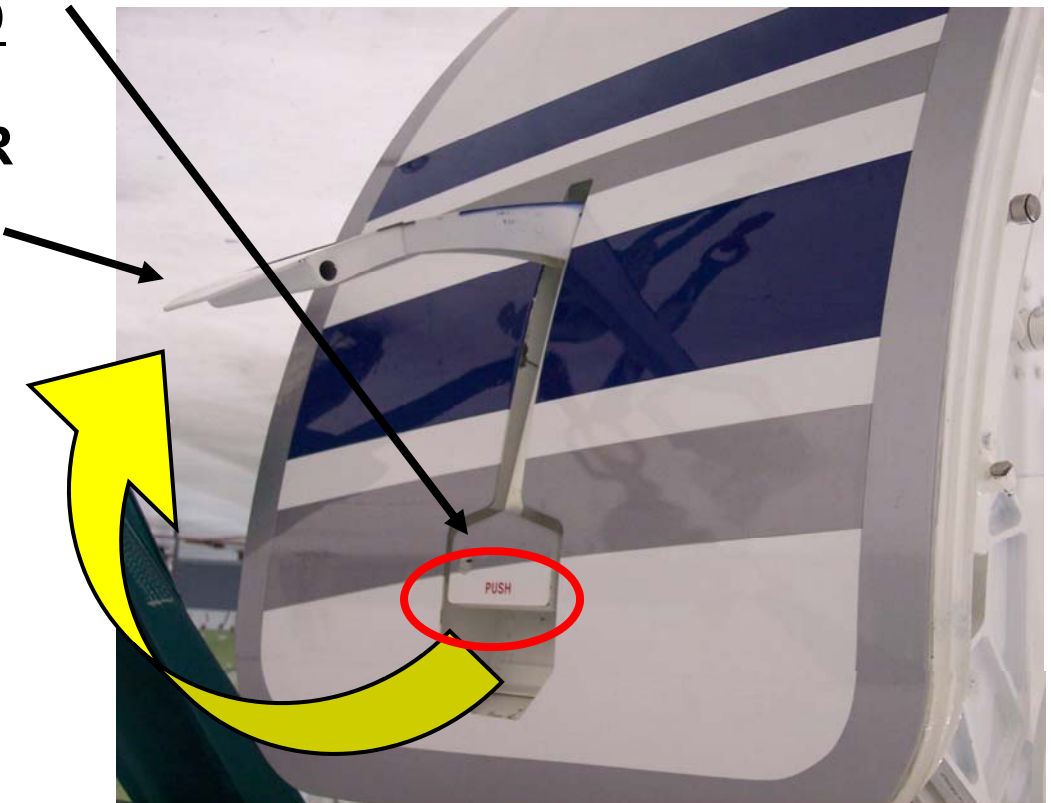
GULFSTREAM GVI
CRASH CREW INFORMATION
MAIN ENTRY DOOR INTERIOR CONTROL HANDLE

- HANDLE USED FROM THE INSIDE ONLY BY AIRCREW.
OPERATION FROM THE INSIDE REQUIRES THAT RED TRIGGER BE SQUEEZED AND ENGAGED PRIOR TO MOVING DOOR LEVER TO OPEN OR CLOSED POSITIONS.



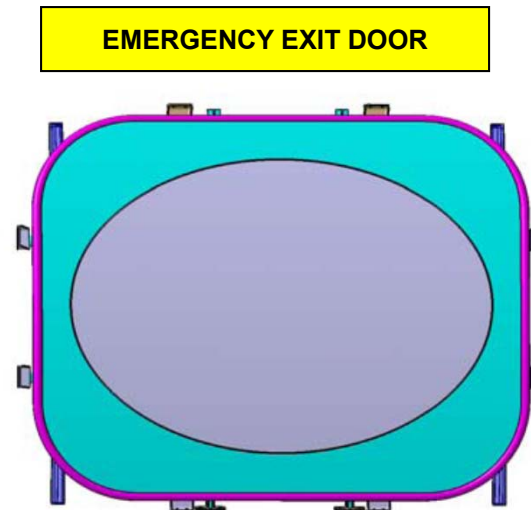
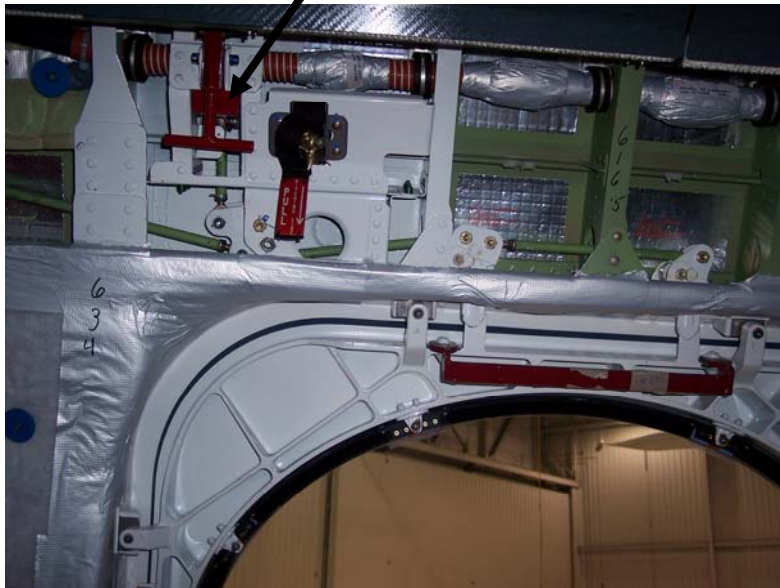
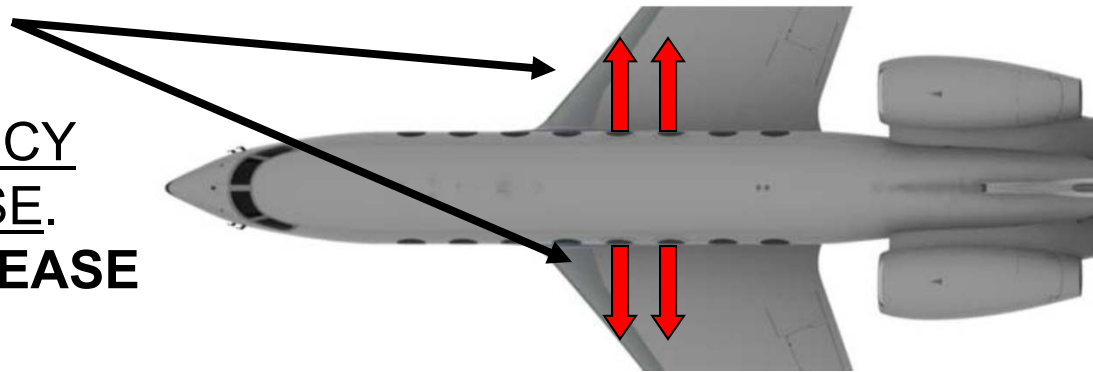
GULFSTREAM GVI
CRASH CREW INFORMATION
MAIN ENTRY DOOR EXTERIOR CONTROL HANDLE

- PUSH ON BOTTOM PART OF DOOR HANDLE LABELED “**PUSH**” TO UNLOCK THE LEVER. PULL THE DOOR LEVER OUT AND UP TO UNLOCK AND RELEASE THE DOOR.



GULFSTREAM GVI CRASH CREW INFORMATION OVERWING EXITS

- FOUR OVERWING EMERGENCY EXITS.
- INTERIOR EMERGENCY DOOR LOCK RELEASE.
PULL DOWN TO RELEASE DOOR.

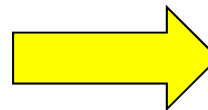


GULFSTREAM GVI CRASH CREW INFORMATION OVERWING EXITS

- OVERWING EMERGENCY EXITS.



- EXTERIOR EMERGENCY DOOR LOCK ACCESS AND RELEASE.



GULFSTREAM GVI CRASH CREW INFORMATION COCKPIT

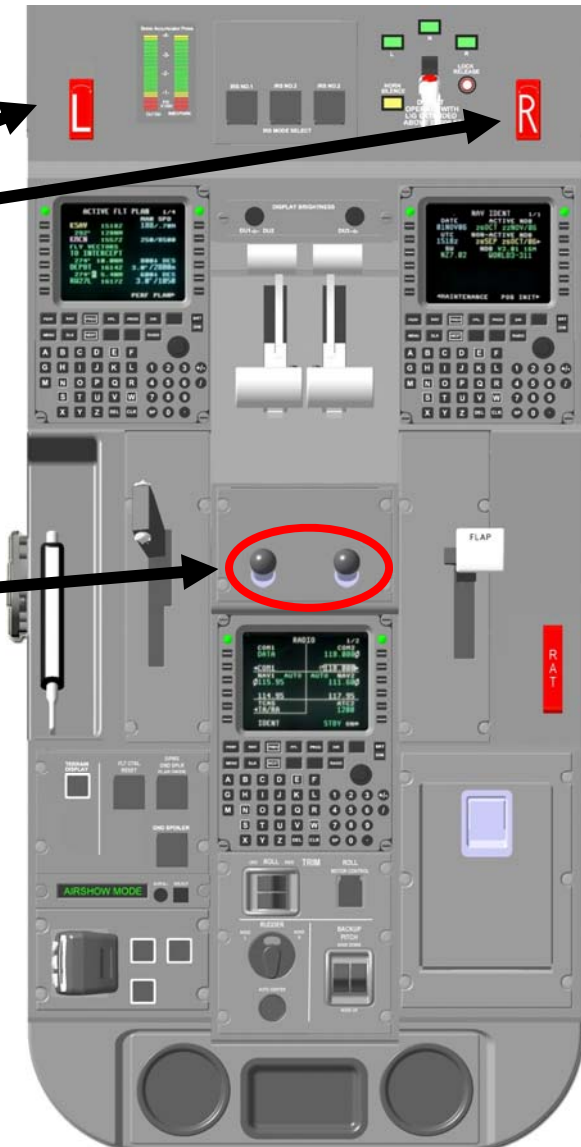


GULFSTREAM GVI CRASH CREW INFORMATION COCKPIT CENTER PEDESTAL



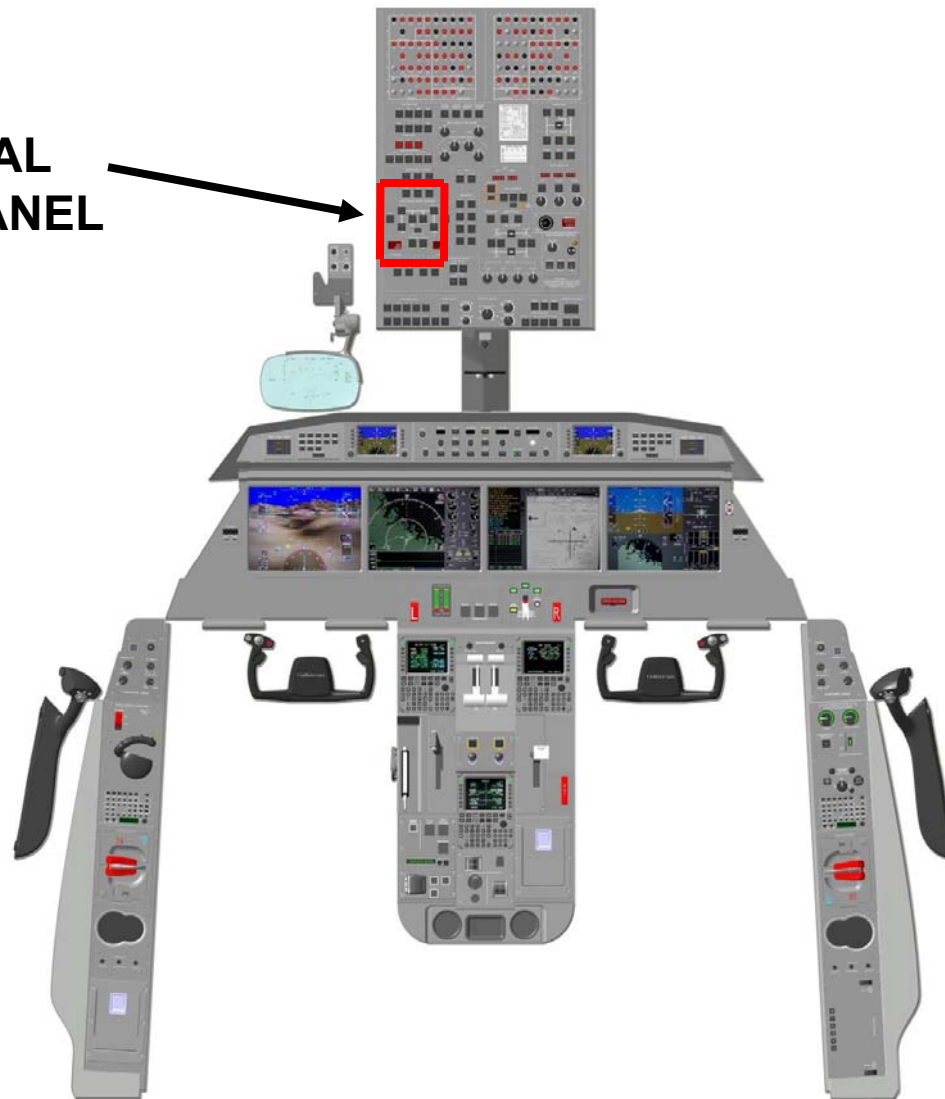
GULFSTREAM GVI CRASH CREW INFORMATION COCKPIT CENTER PEDESTAL

- TWO FIRE EMERGENCY CONTROL HANDLES. **PULL OUT FIRE EMERGENCY HANDLES TO SHUT OFF ALL FLUIDS TO ENGINES.**
- TWO ENGINE FUEL CONTROL SWITCHES. **PULL OUT TO UNLOCK AND MOVE DOWN TO SHUTOFF.**



**GULFSTREAM GVI
CRASH CREW INFORMATION
COCKPIT OVERHEAD PANEL**

**ELECTRICAL
CONTROL PANEL**



GULFSTREAM GVI

CRASH CREW INFORMATION

COCKPIT ELECTRICAL CONTROL PANEL

1. EMERGENCY BATTERIES.
**PUSH "OFF" BUTTON TO
TURN OFF.**

2. TWO FLIGHT CONTROL
BATTERIES. **PUSH TO
TURN OFF.**

3. TWO BATTERY SWITCHES.
PUSH TO TURN OFF.

