

**State of the  
Society**  
**Doug Benjamin**  
**2012-2013 President**

The Society of Experimental Test Pilots



# 2012-2013 Board of Directors

Doug Benjamin - President

Kevin Prosser - President-Elect

Mark Stucky - Vice President

Brett Vance - Secretary

Mike Wallace - Treasurer

Gary Plumb - Legal Officer

Greg Lewis - Technical Advisor

Ken Weir - Technical Advisor

Steve Rainey - Executive Advisor



# 2012-2013 Symposia

## Completed:

- Southwest Section
  - Dallas-Fort Worth TX, October
- European Flight Test Safety Workshop
  - Amsterdam, October
- Southeast Section
  - Eglin AFB FL, February 22
- West Coast Section
  - San Diego, CA, March 22-23
- East Coast Section
  - NAS Patuxent River MD, April 12
- Flight Test Safety Workshop
  - New Orleans LA, April 23-25



# 2012-2013 Symposia

## Upcoming:

- Northwest Section
  - Seattle WA, May 3
- Great Lakes Section
  - Wright-Patterson AFB OH, May 16
- European Section
  - Madrid Spain, May 22-25
- Central Section
  - Wichita KS, June 10



# 2012-2013 Symposia

## Upcoming (continued):

- EAA AirVenture
  - Oshkosh WI, July 29-August 4
- 57<sup>th</sup> International Symposium & Banquet
  - Anaheim CA, September 25-28
- Southwest Section
  - Dallas TX, October
- European Flight Test Safety Workshop
  - Amsterdam, November



# President's Focus & Initiatives

- Continue Doing What We Do Best
  - Superior Symposia & Papers
  - Provide sufficient value to our members that they will travel on their own time; use their own money to attend
  - Increase Flight Test Safety
- Electronic Improvements
  - Improvement of paper research



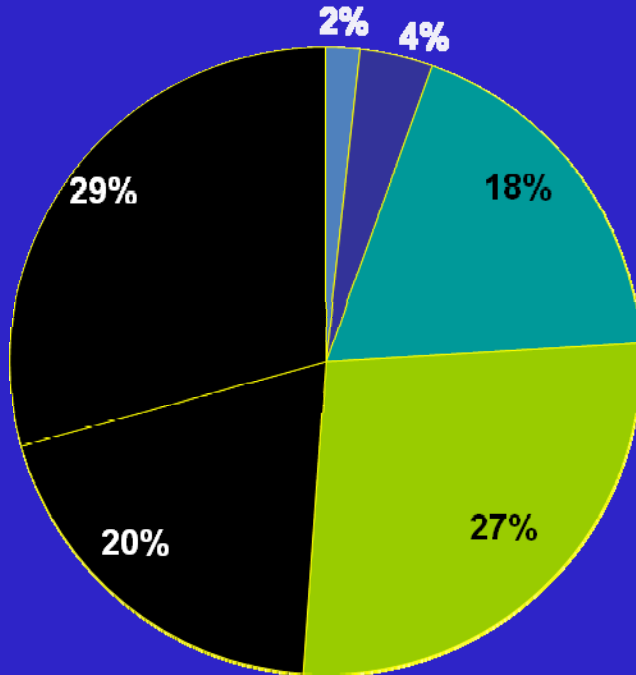
# President's Focus & Initiatives

- UAV Development and Flight Test Committee
  - Past President Rogers Smith Chairman
  - Test Pilots Critical in the Development and Flight Testing of UAVs
  - Revised tasking; will evolve product to policy-makers



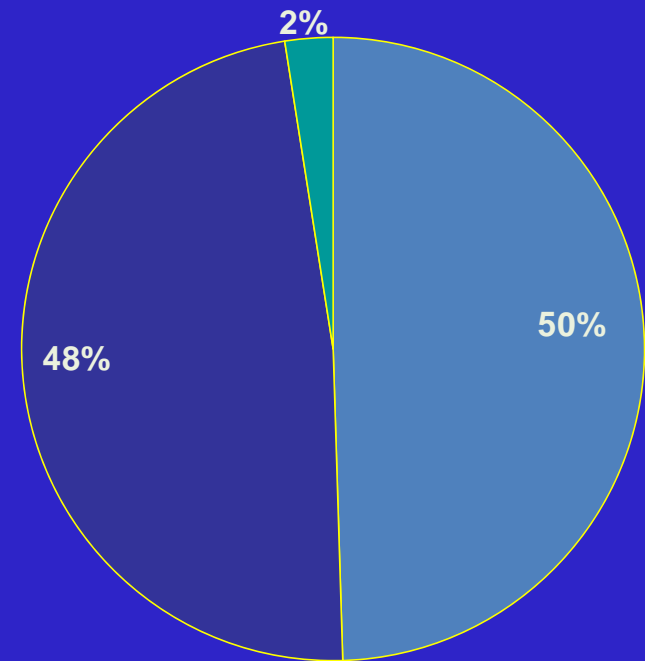
# President's Focus & Initiatives

■ No Answer ■ 25-35 ■ 36-45 ■ 46-55 ■ 56-65 ■ >65



AGE

■ NO ■ YES ■ No Answer



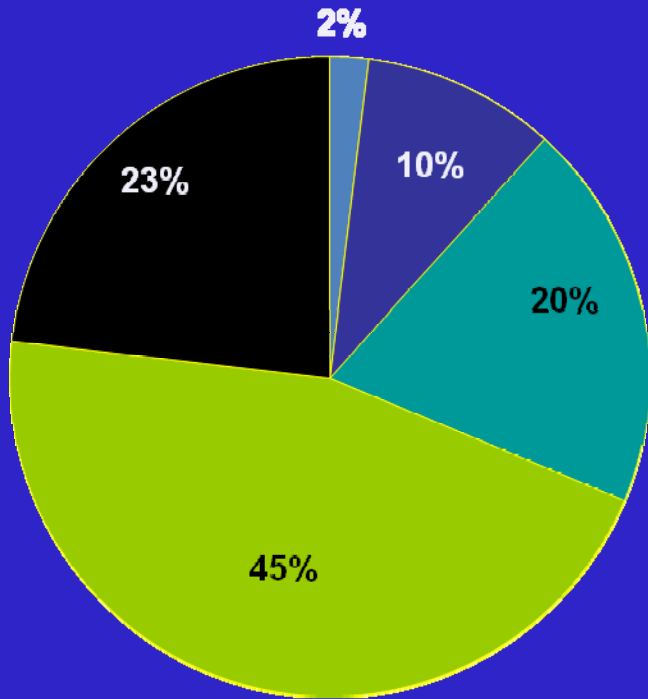
Actively Engaged



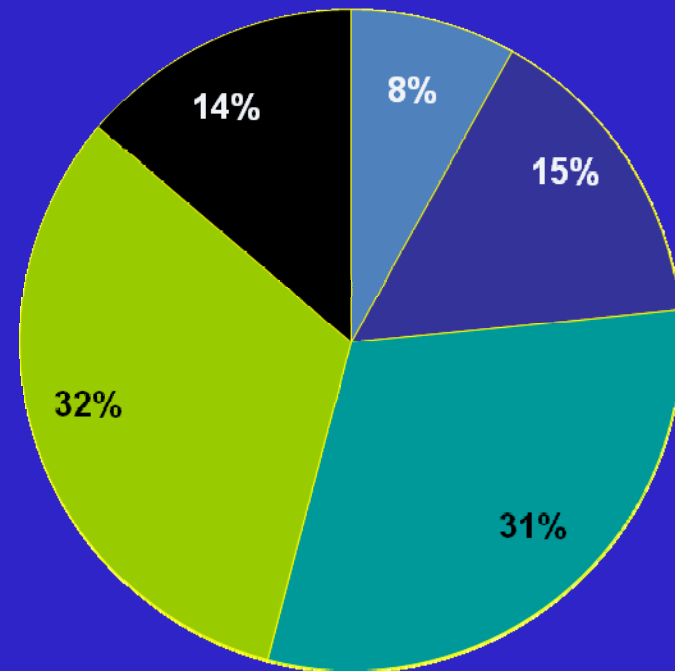


# President's Focus & Initiatives

Strongly Disagree Slightly Disagree Somewhat Agree Agree Strongly Agree



SETP Should Build a State of the Art Website to Make it an Online Resource and Working Tool for the Membership



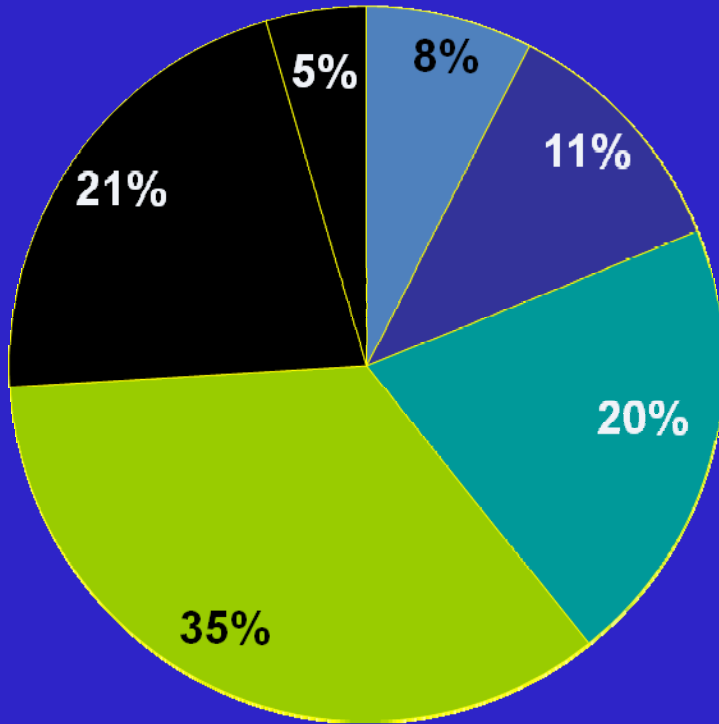
I would be willing to raise dues by 5% to support IT improvements



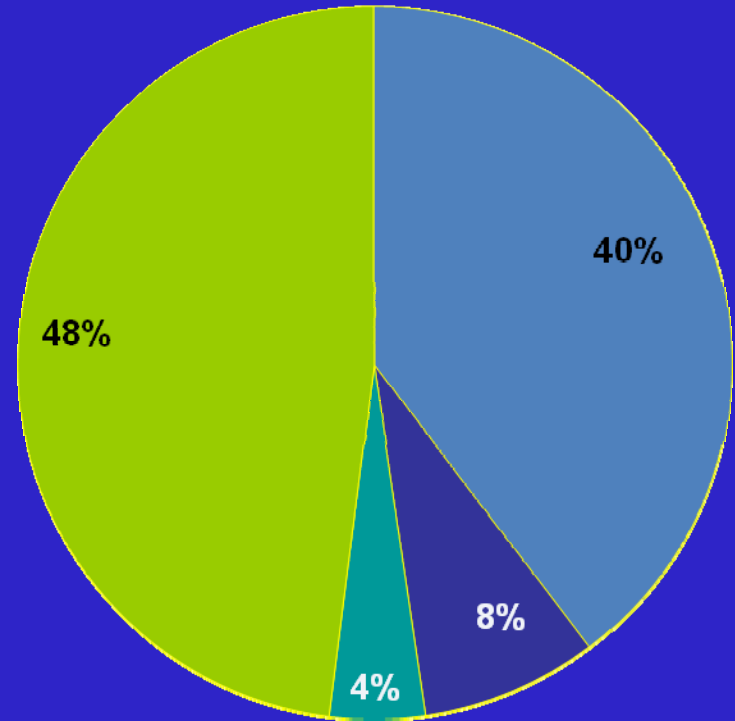
# President's Focus & Initiatives

- Strongly Disagree
- Slightly Disagree
- Somewhat Agree
- Agree
- Strongly Agree
- 2012

- 5-10%
- 10-15%
- 15-20%
- Don't Raise Dues



I believe that SETP should have a checklist to follow in the event of a member's death and points of contact for grief counseling, financial counseling etc. should be available.

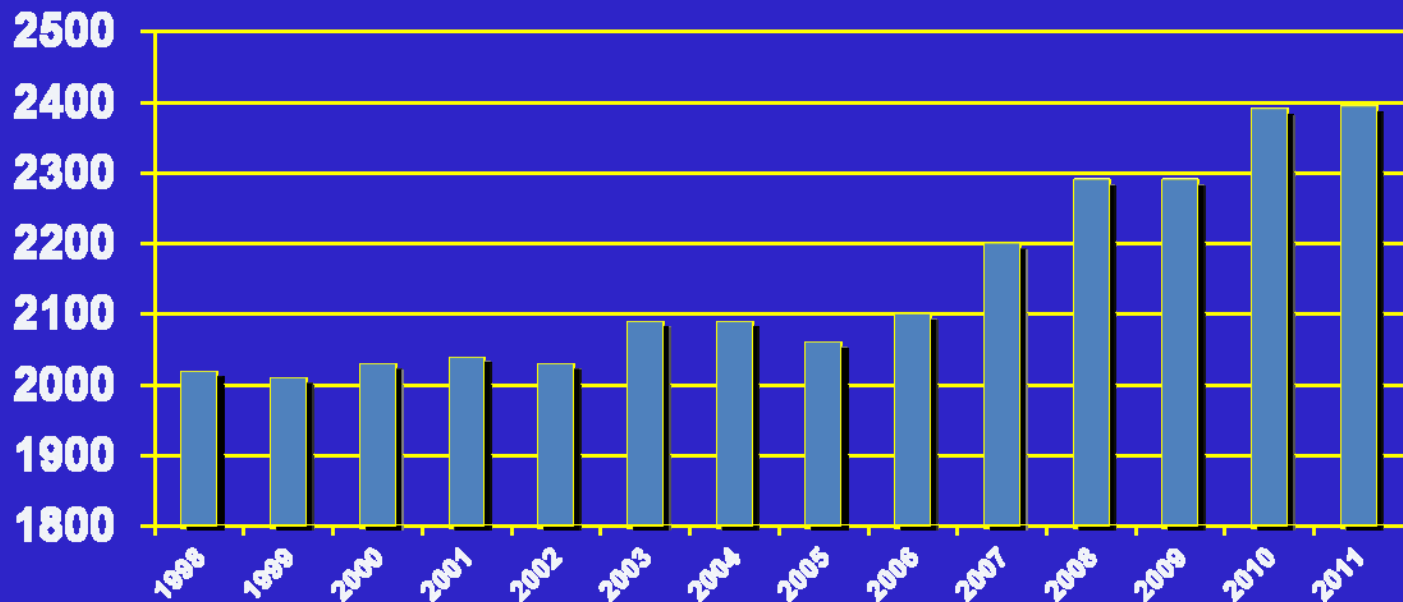


To support this effort I would support an increase in dues of:



# Membership

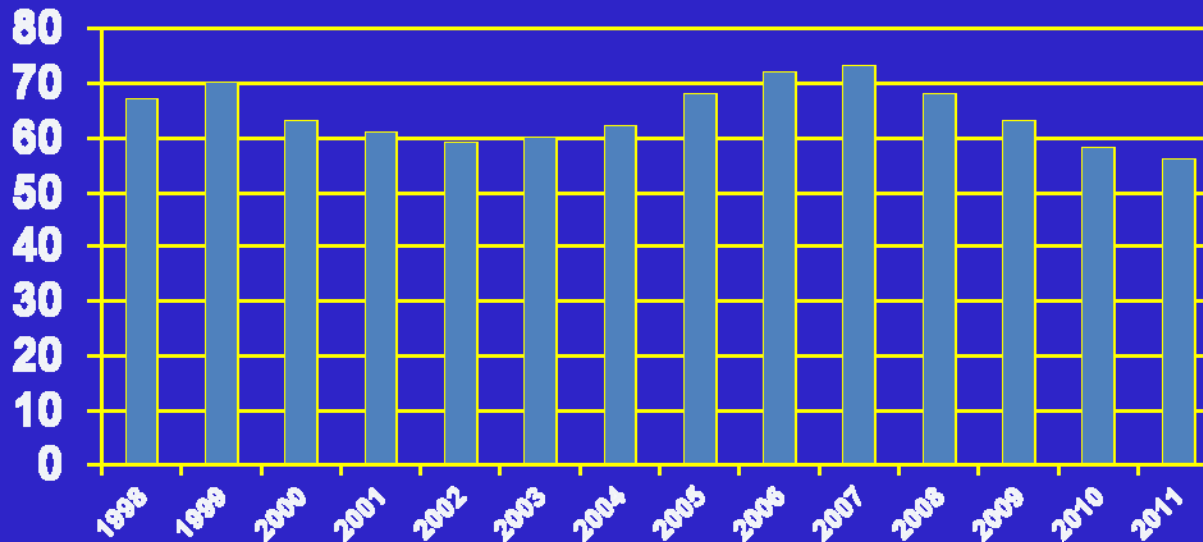
- Membership at all time high
- Climbing
  - Currently – 2401 members





# Corporate Members

- Recent Downward Trend
- Fewer large Corporate Members
  - Currently - 57





# Finances

- Solid, but under threat – perhaps you've heard of sequestration?
- Dues steady for 12 years
- Currently ~\$460k, less \$260k set aside for Lifetime dues
- Potential for big challenges if Anaheim is not well-attended
- Letter to the membership
- I'm very encouraged by what I've seen



# Other SETP Efforts

- Scholarship Foundation
  - More than \$4.1M in the bank
  - 8 beneficiaries in college today
- SETP Foundation
  - Charitable 501(c)3 organization
  - Future financial engine of the Society
  - Educational, Mentoring, Safety (FTSC), Building, Symposia, Publishing, Public Relations, Fund Raising

See the SETP Foundation WEB Site for more information  
accessed via the SETP Home Page ([www.setp.org](http://www.setp.org))



# Family Support

- **Family Handbook:**
  - <http://www.setp.org/setp-foundation/setp-partners-family-handbook.html>
- **Critical Incident Response Committee**
  - **Grief/Trauma Counseling Training**
    - **1 Member, 1 Staff, 1 Spouse**
      - **Eric Hansen, Laurie Simmons & Lisa Brown**
  - **SETP link to May Day Foundation Checklists, Best Practices and Communication with ALPA**



# Summary

- Society is Well & Healthy, BUT:
  - We are potentially financially challenged
- We're spending a lot of time working to ensure this is a professional organization that members will spend their personal time and money on, while trying very hard to be good stewards of their money
- Questions/comments/suggestions for me